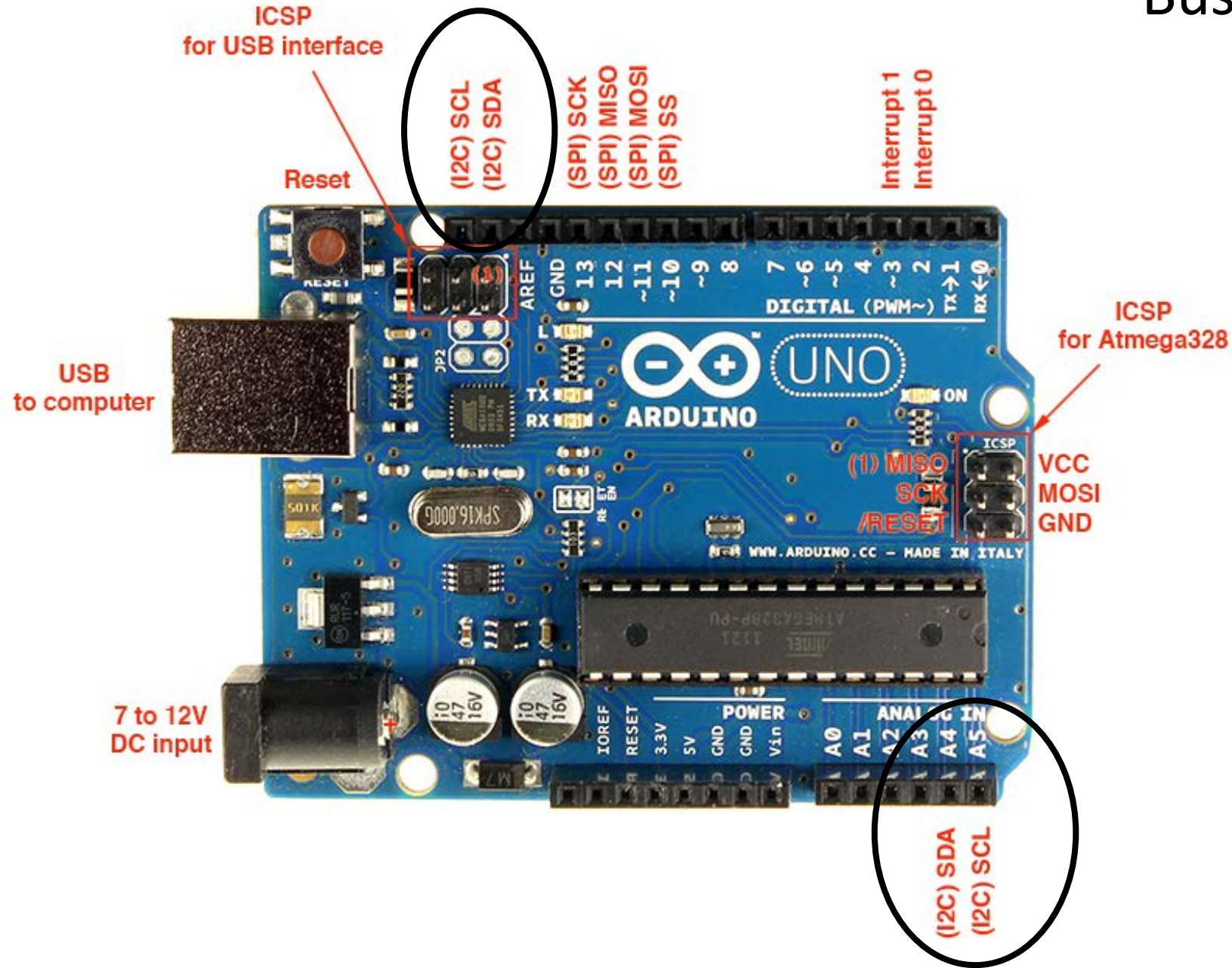


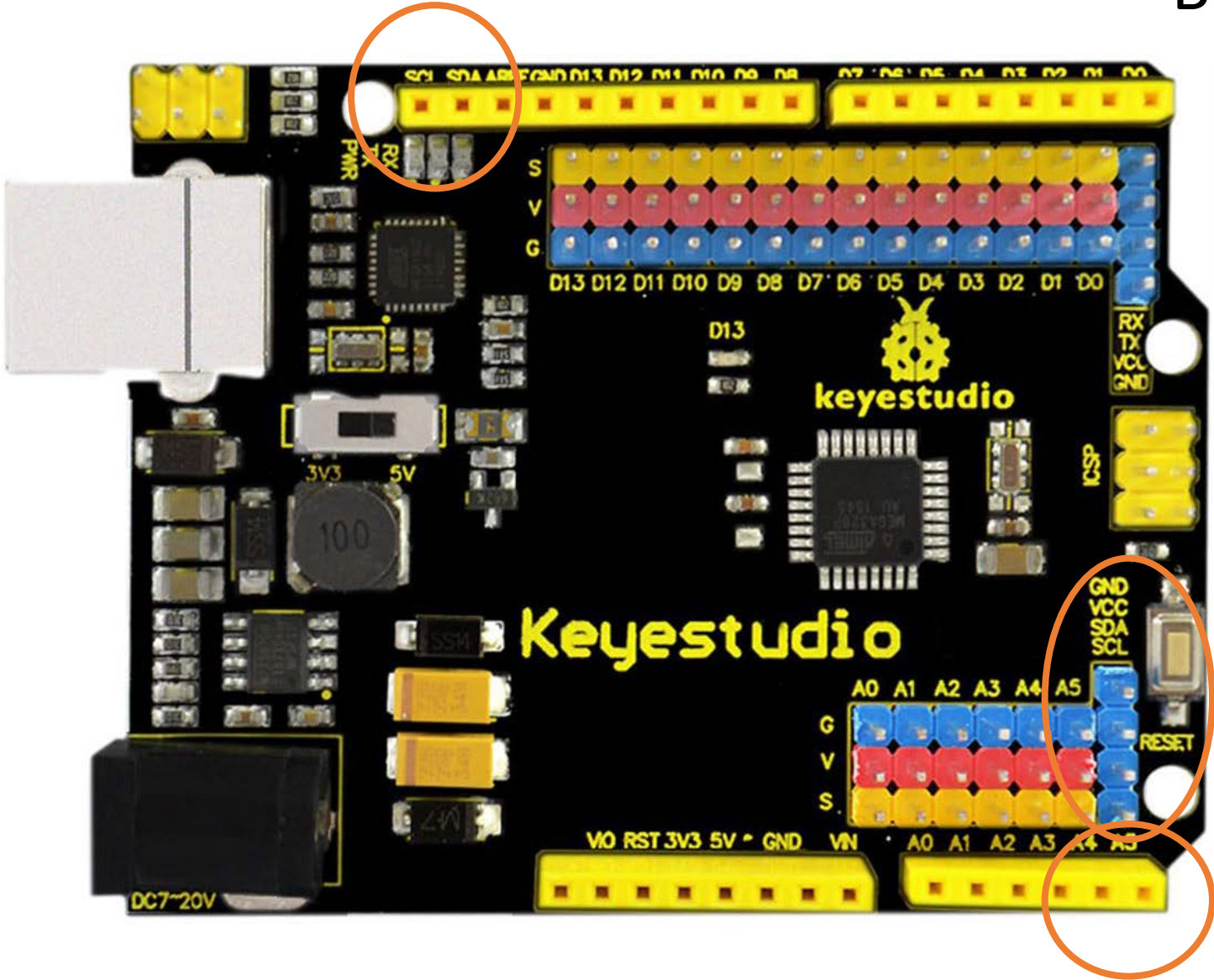
# Bus I2C en Arduino



SDA (pin A4)  
SCL (pin A5)

GND  
VCC

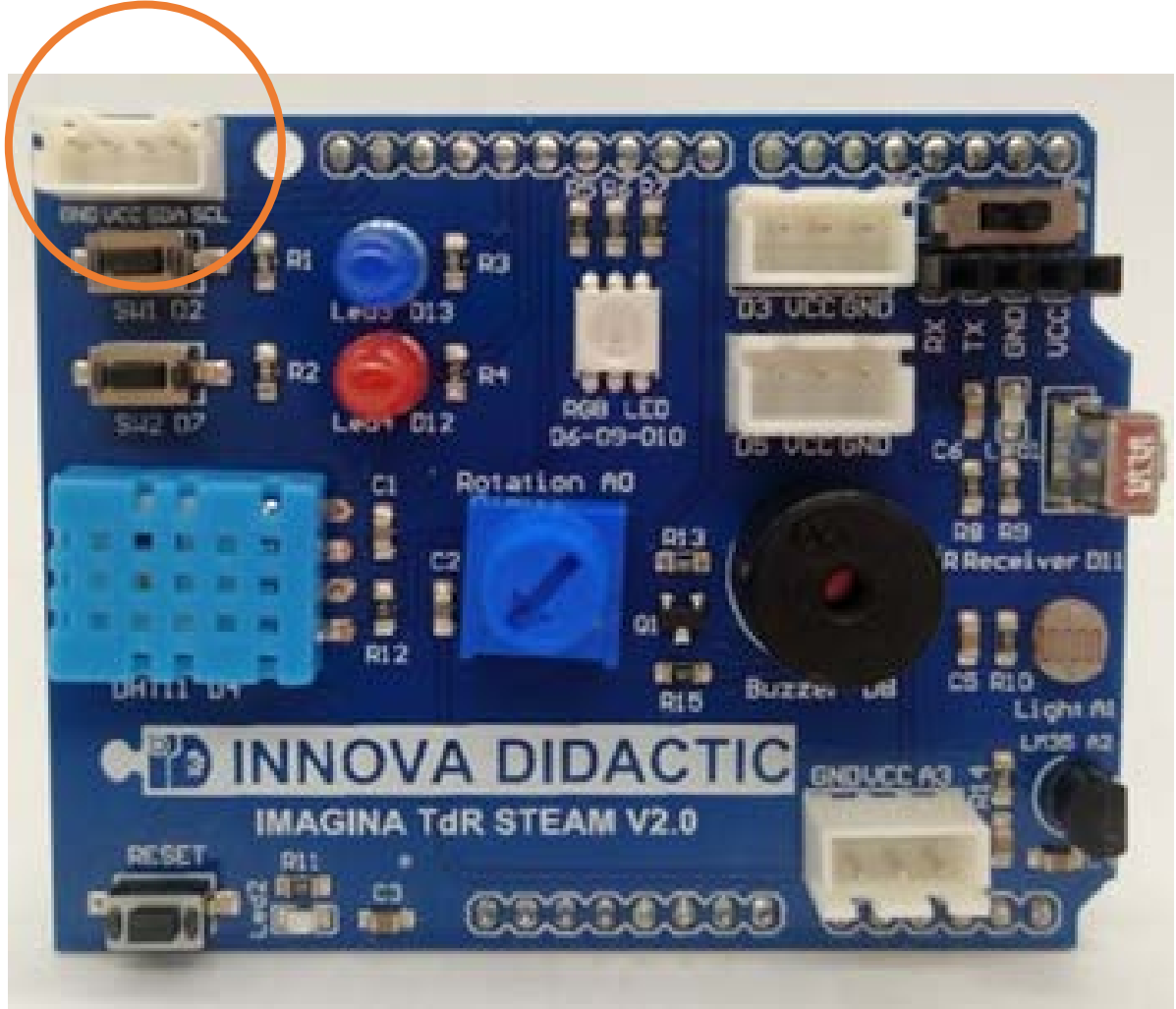
# Bus I2C en Arduino



SDA (pin A4)  
SCL (pin A5)

GND  
VCC

# Bus I2C en Arduino



**SDA** (pin A4)  
**SCL** (pin A5)

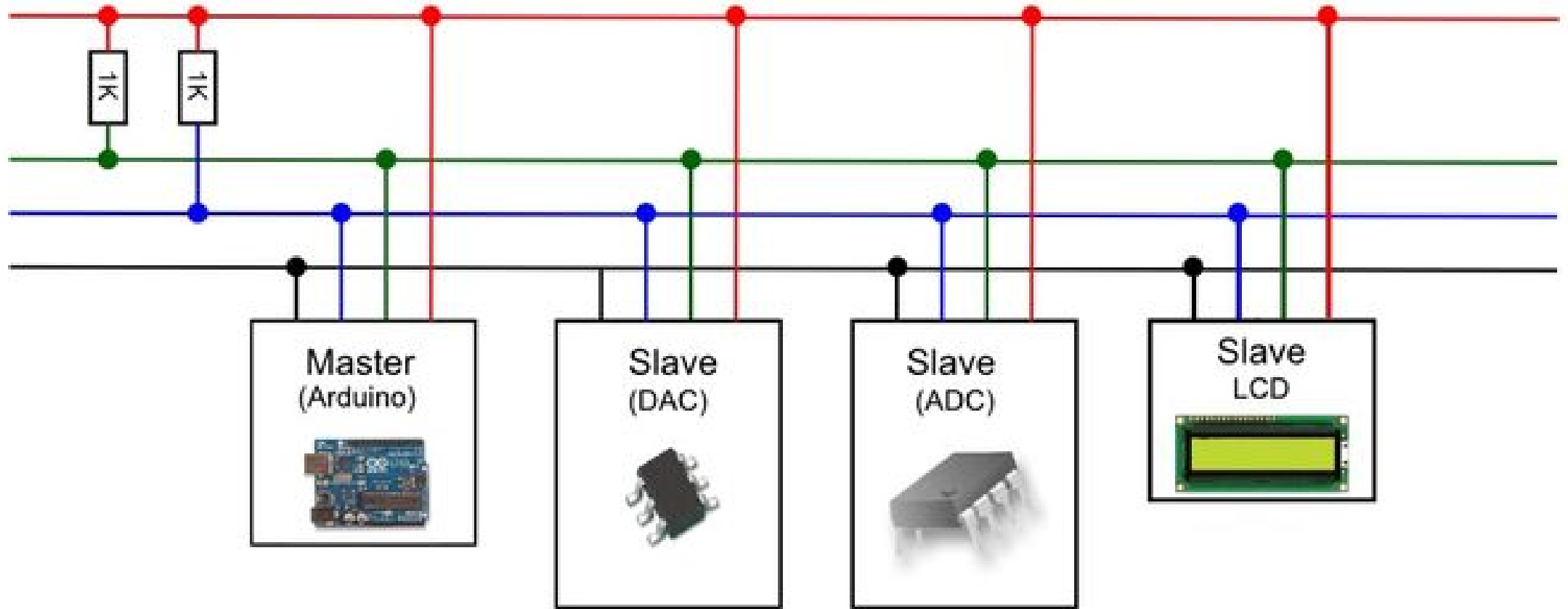
GND  
VCC

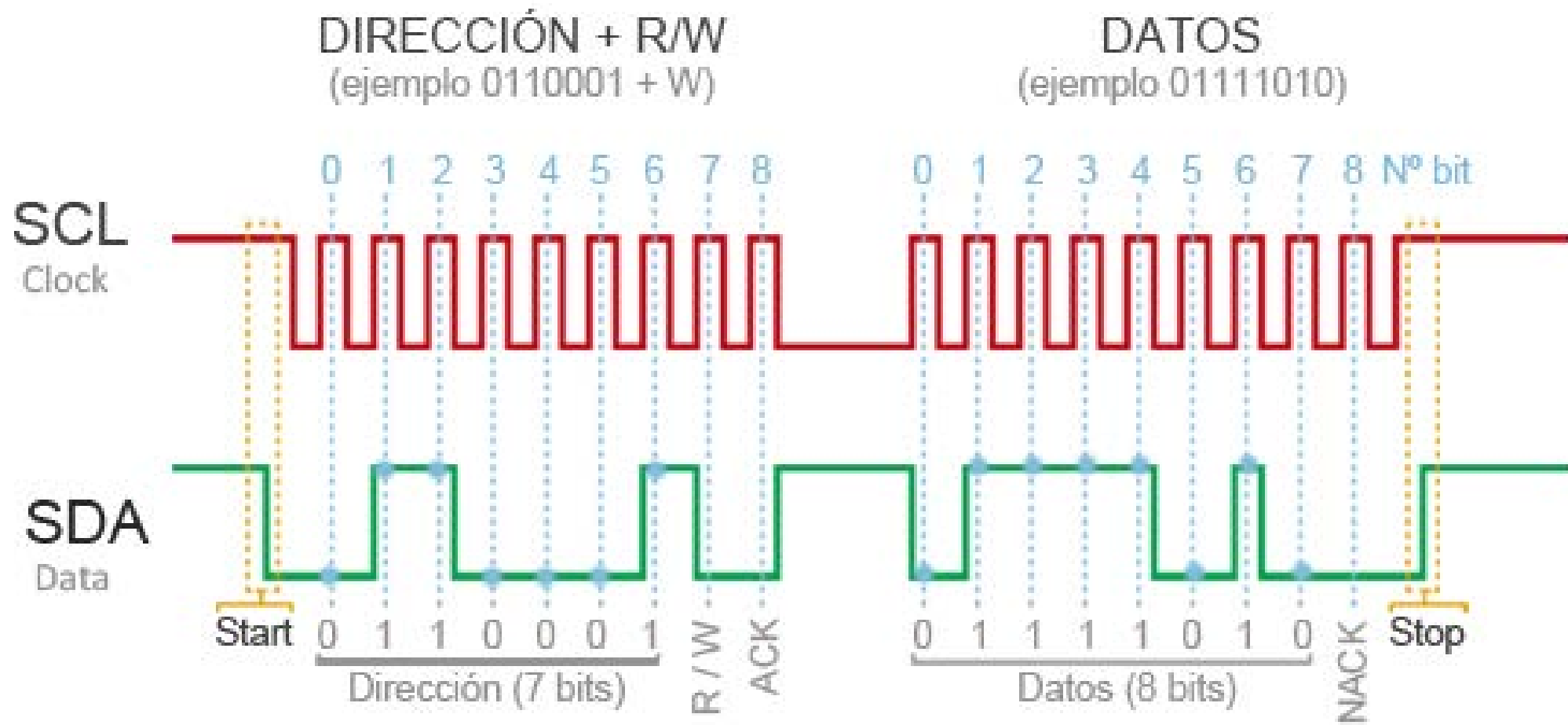
VCC

SDA

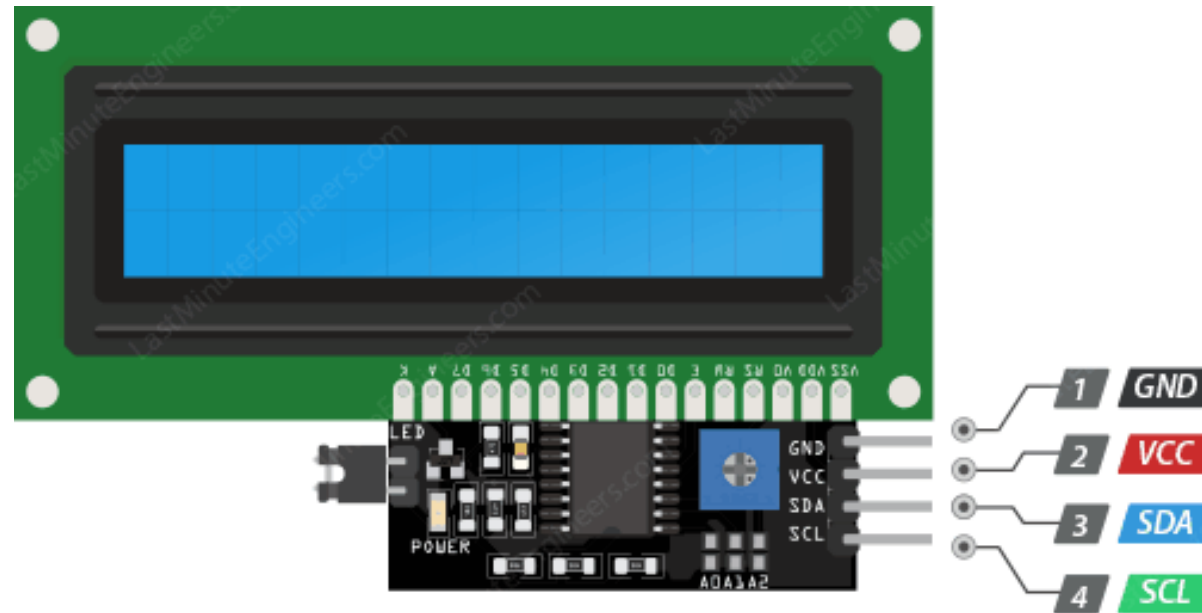
SCL

GND





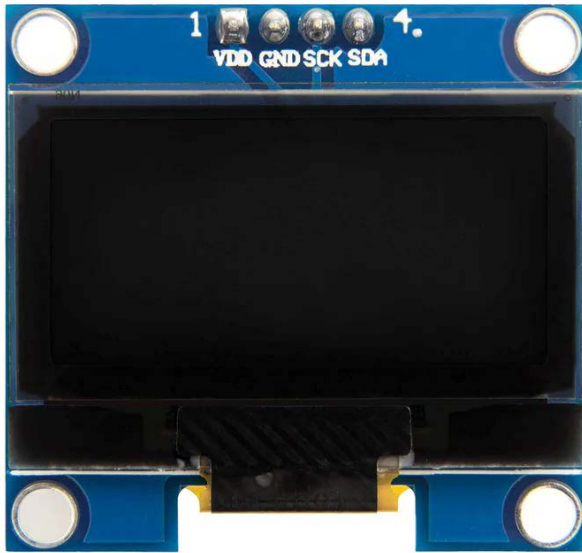
# Pantalla LCD con adaptador I2C



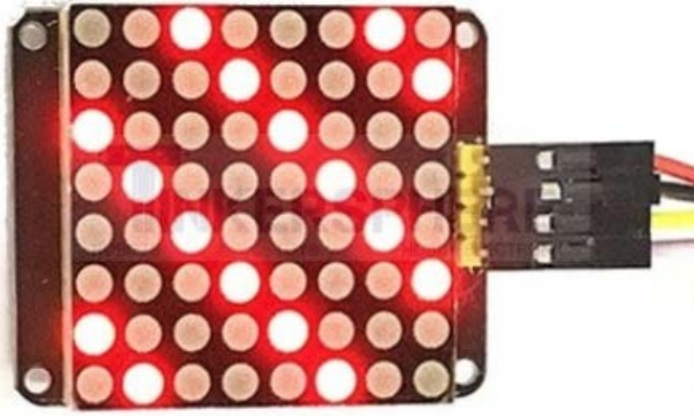
I2C LCD Pinout



## Otros dispositivos I2C



Pantalla OLED



Matriz led



Acelerómetro

## Otros dispositivos I2C

