

# ESP32 Plus STEAMakers PinOut

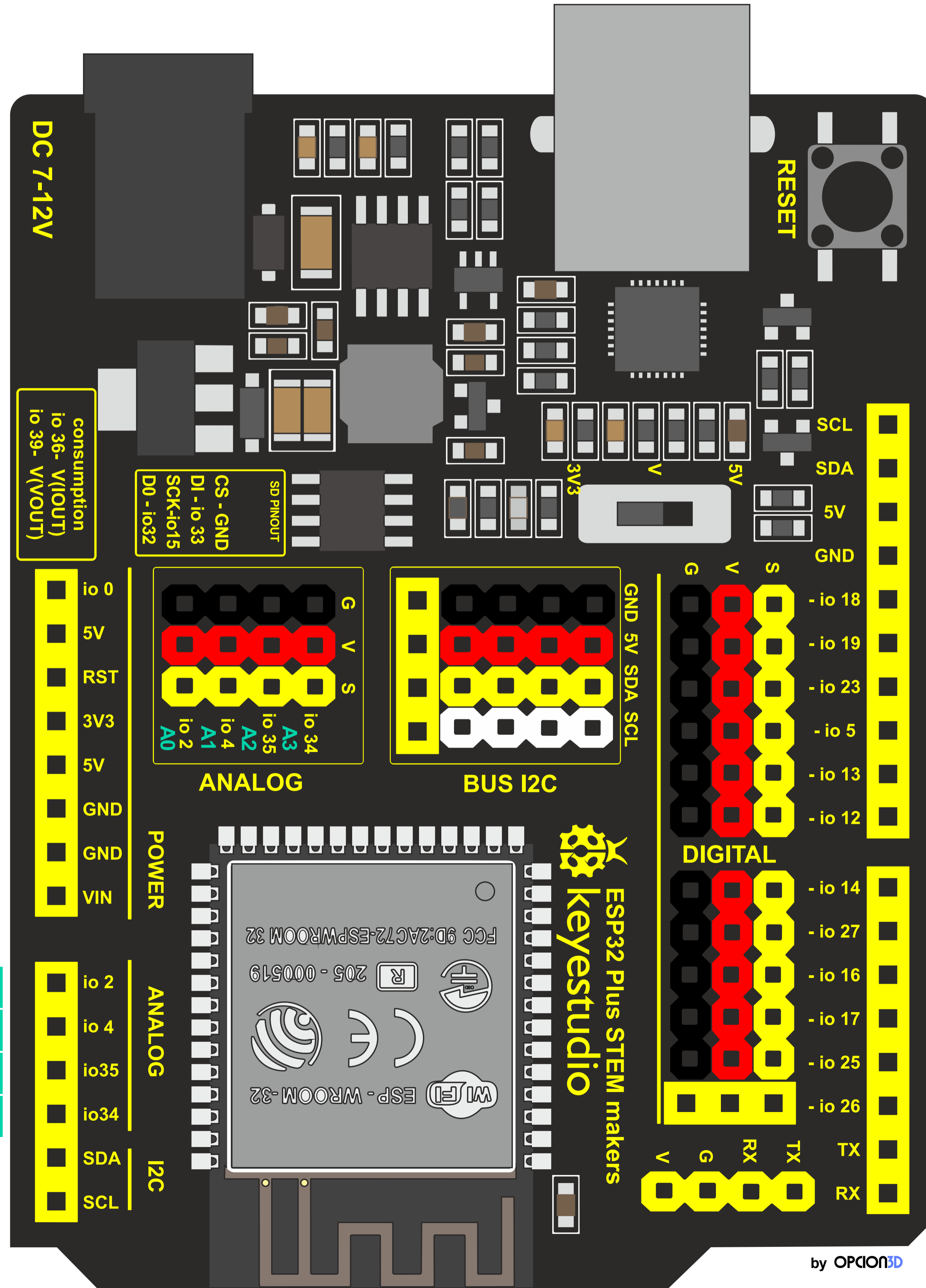
- Digital I/O ports (PWM)
- Digital Input ports
- Analog Input 12 bit (0-3.3V)
- Analog Output 8 bit (0-3.3V)
- Capacitive Touch Sensor
- I/O pins from RTC ultra low power processor
- SD card interface
- I2C bus
- SPI bus
- Serial interface
- HSPI bus
- Consumption Sensor
- Arduino Equivalence

## Consumption

GPIO36	V (I OUT)
GPIO39	V (V OUT)

## SD Card

GND	GND
GPIO33	D1
GPIO15	SCK
GPIO32	D0



RTC11	TOUCH1	ADC2-1	GPIO00
			+5V
			RESET
			+3.3V
			+5V
			GND
			GND
			VIN

HSPI WP	RTC12	TOUCH2	ADC2-2	GPIO02	A0
HSPI CD	RTC10	TOUCH3	ADC2-0	GPIO04	A1
		RTC5	ADC1-7	GPIO35	A2
		RTC4	ADC1-6	GPIO34	A3
			SDA	GPIO21	
			SCL	GPIO22	

	GPIO22	SCL			
	GPIO21	SDA			
	+5V				
	GND				
D13	GPIO18	SCK			
D12	GPIO19	MISO			
D11	GPIO23	MOSI			
D10	GPIO05	CS			
D9	GPIO13	ADC2-4	RTC13	HSPI-MOSI	
D8	GPIO12	ADC2-5	TOUCH5	RTC15	HSPI-MISO
D7	GPIO14	ADC2-6	TOUCH6	RTC16	HSPI-SCK
D6	GPIO27	ADC2-7	TOUCH7	RTC17	HSPI-CS
D5	GPIO16	UART2 TX			
D4	GPIO17	UART2 RX			
D3	GPIO25	ADC2-8	DAC1	RTC6	
D2	GPIO26	ADC2-9	DAC1	RTC7	
D1	GPIO01	UART0 TX			
D0	GPIO03	UART0 RX			